

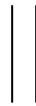


**Botswana Network of
People Living with HIV and AIDS**

P O Box 1599 • Mogoditshane • Botswana
Tel: (267) 306224
Plot 5306 • Maratadibe Road/Shashe North Road • The Village

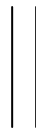


**ANNUAL PLAN OF ACTION
2005**



SUBMITTED

TO



NATIONAL AIDS COORDINATING AGENCY

Prepared by
BONEPWA+ Secretariat
P.O. Box 1599,
MOGODITSHANE
TEL: 00267-3906224
FAX: 00267-3906224
e-mail: bonepwa@botsnet.bw
bonepwa@info.bw
Website: www.bonepwa.botsnet.co.bw

1.0 Introduction

The idea of a network of people living with HIV/AIDS was conceived in early 1995. A lot of consultations and need assessments were carried out notably with the financial and technical support of the AIDS/STD Unit, Ministry of Health and other development partners such as the UNDP and NGOs such as Ditshwanelo, BONASO to discuss the form, and functions of such a network. The dream came true when it was able to registered in 2000. Now the network is affiliated to the Network of African People Living with HIV/AIDS.

The importance of integrating People Living With HIV/AIDS (PLWHAs+) into the national response strategies for the reduction of the incidence and impact of HIV/AIDS has been long recognized at both the national and international levels. Already by 1999, UNAIDS had come up with the Best Practice Collection on From Principle to Practice: Greater Involvement of People Living With or Affected by HIV/AIDS. National AIDS Policy 1992, MTPII gave a broad scope of opportunity for the involvement of People Living with HIV/AIDS in prevention, care and support into the national response.

The HIV/AIDS epidemic which has succeeded in making Botswana stand out with the unenviable reputation of being the country with the highest reported HIV prevalence rates in the world - an estimated 300,000 Batswana (out of a population of 1.6 million people) are now living with HIV and AIDS. Estimates of HIV prevalence vary but they all bring the same message: the epidemic has reached crisis proportions. The President has declared a war situation – *ntwa e Bolotse*. **“We are threatened with extinction. People are dying in chillingly high numbers. It is a crisis of first magnitude,”: Festus Mogae, President of the Republic of Botswana (2001).**

Botswana Network of People Living with HIV/AIDS (**BONEPWA+**) has joined hands with other stakeholders in fighting the HIV/AIDS epidemic

Mission, Goals and Objectives

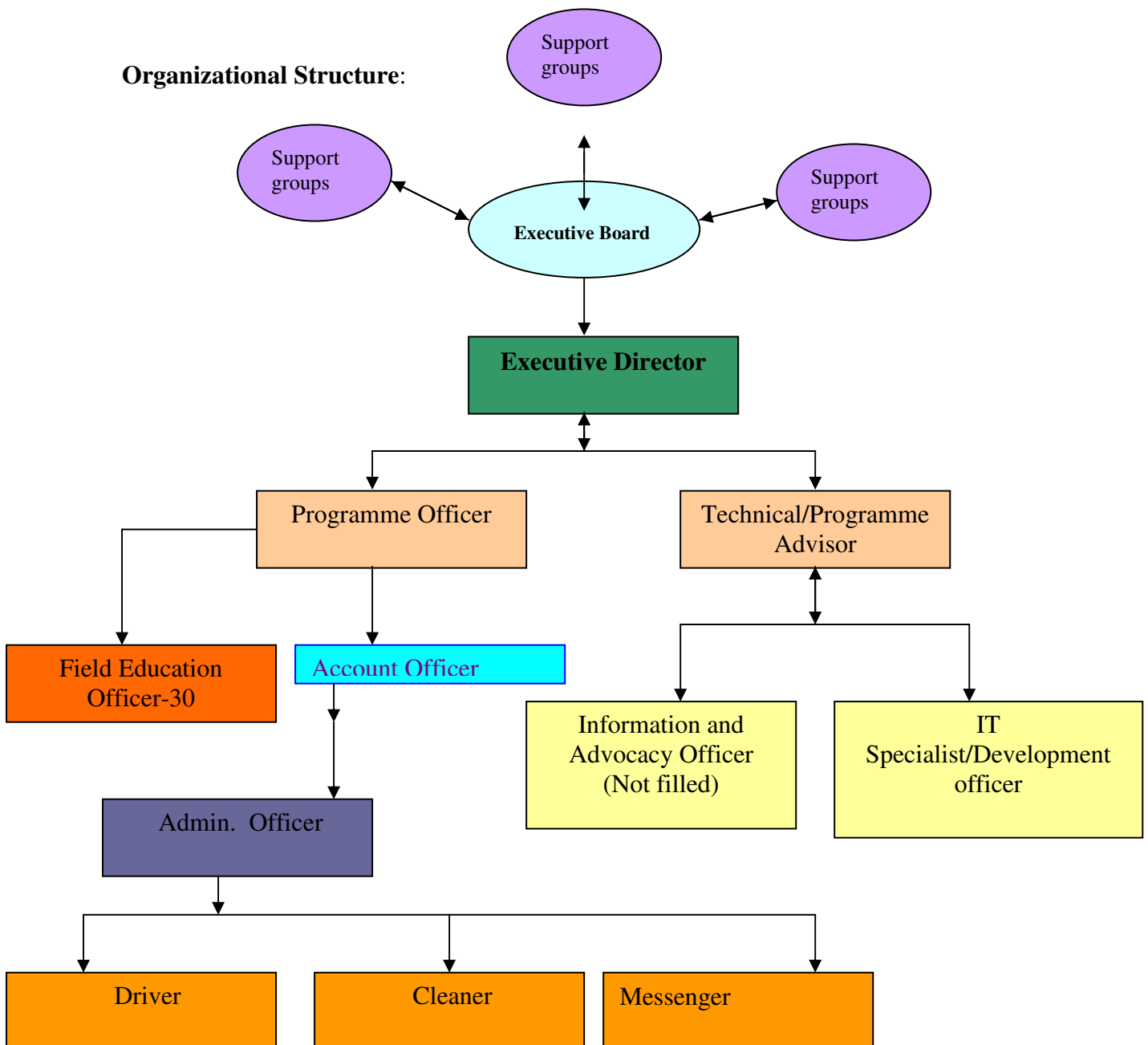
As **BONEPWA+**, we exist to improve the well being and quality of life of all people living with HIV/AIDS and to protect the nation of Botswana from further infections by promoting positive living, self – reliance, reduction of infection rates through HIV/AIDS education, prevention and care. In achieving these, we strive to maintain the following principles:

- Consultation: Nothing for us without us
- Transparency
- Accountability
- Confidentiality
- Community participation
- Non – sexist and non – partisan

BONEPWA+ seeks to achieve its mission by:

- Facilitating the sharing of information, ideas, experiences and resources between and amongst support groups in Botswana;
- Facilitating the formation of support groups nation wide;
- Promoting and supporting networking and partnership building in HIV/AIDS programmes among people living with HIV/AIDS with other organizations locally and internationally;
- Facilitating the coordination of support groups' programmes on HIV/AIDS in order to reduce duplication, enhance their role and impact;
- Providing leadership and a common forum for concerted advocacy efforts and for appropriate policies, legislation and human rights for PLWAs;
- Engaging in empowerment and enterprise development activities that will improve the quality of life of PLWAs;

Organizational Structure:



An Executive Board has been set-up and restructured to provide vision, oversight and direction to the network. This structure ensures that the programmes of the network are relevant to the needs of the constituency that is PLWAs.

A Secretariat has been set up and full time staff; Executive Director (NACA) and UNV-Programme Advisor (UNDP), Development Officer (WUSC) and with the support of ACHAP, Program Officer, Administrative Assistant, Driver, Messenger and Cleaner are hired. They have been given adequate job descriptions and are busy setting up systems and procedures for establishing a credible and efficient network.

Achievements:

National AIDS Coordinating Agency (NACA) is being a major and regular partner; BONEPWA+ is supported for Advocacy, Institutional Capacity Building, Networking and support to support groups. Strategic plan for 2001-2004 has been reviewed and updated in line with National Strategic Planning Framework 2004-2009. A major theme for **BONEPWA+** has been the Integration of People Living with HIV/AIDS into mainstream Design, Planning, Implementation, Monitoring & Evaluation of the HIV/AIDS Response in Botswana. **BONEPWA+** is equally concerned with **Integrating gender into HIV/AIDS Interventions for/by PLWHA's**. **BONEPWA+** is a member of National AIDS Council. It is taking part in significant role in advocating, mobilization of PLWAs in many of the sectors strategies and the activities. Mobilization of Membership and rationalizing the criteria, benefits, rights and obligations of members has been initiated. 72 support groups have been formed and affiliated to BONEPWA+. Secretariat of BONEPWA+ is being supported by NACA and ACHAP.

Partnership and networking relations have been built with a number of government departments, international AID Agencies, such as the **UNDP, UNICEF, SKILLSHARE, WUSC, POLICY PROJECT** and other NGOs and private sector representatives.

UNICEF/MoE has been a partner with BONEPWA+. “ **Ringing the Bell**” A **retsogeng** a pilot project's evaluation completed and new phase is going to be implemented in 2005.

World University Service of Canada (WUSC) is supporting BONEPWA+ for technical support to strengthen the entrepreneurship skills for support groups sustainability.

ACHAP

With the financial support of ACHAP, BONEPWA+ is implementing activities mainly in two major areas; PLWAs in support groups throughout Botswana are educated on prevention, basics on treatment and care, nutrition, counselling and build-up

institutional capacity building of BONEPWA+ establishing and strengthening of more PLWAs Support groups in the communities. The project is ending by December 2004.

Proposed Annual Plan of Action of BONEPWA+ for 2005 supported by NACA

In line with the mission of BONEPWA+, it is following strategic plan 2004-2009 to achieve following strategic objectives.

Strategic Objectives:

1. To build and strengthen the institutional capacity of BONEPWA+ as a network Of PLWHAs and their organizations.
2. To improve quality the quality, availability and accessibility of care and support services in the community through support groups.
3. To strengthen the capacity for participatory monitoring and evaluation of support group community based interventions.

Following activities of BONEPWA+ are planned and will be implemented as per Plan of Action 2004 through the support of NACA.

Activities:

Strategic Objective 1. To build and strengthen institutional capacity of BONEPWA+

- 1.1 Conduct training on HIV/AIDS Programming and Management to Support Group and BONEPWA+ Staffs.
- 1.2 Train BONEPWA+ and support group members on organizational management, development AND Governance.
- 1.3 Establish a Resource Centre.
- 1.4 Organise and support in and out of the country study tours and exchange programme.
- 1.5 Produce quarterly newsletter focusing on the work of support groups and PLWHAs.
- 1.6 Organize reflection workshop for support groups and PLWHAs to share their experiences.

- 1.7 Update BONEPWA+ Website focusing Network, PLWHAs and support group activities.
- 1.8 Printing of advocacy strategy for PLWHAs.
- 1.9 Organise a development partners and donors meeting to mobilise support for the Strategic Plan Implementation.
- 1.10 Conduct training for support group in proposal writing, report writing.
- 1.11 Conduct baseline survey on the current status and needs of PLWHAs with disabilities.

Strategic Objective 2. To improve the quality, availability and accessibility of care and support services being offered by support group.

- 2.1 Train support group and PLWHAs in lay counselling.
- 2.2 Train support groups and PLWHAs in Peer Education.
- 2.3 Train and orient support groups on ARV therapy and PMTCT.
- 2.4 Train support group on Basic home based care/palliative care.
- 2.5 Train support groups on the care and support of people with disabilities.
- 2.6 Formation of support groups countrywide.
- 2.7 Train support groups on social mobilization
- 2.8 Assist support groups to establish nutritional gardens and poultry farms for PLWHAs and Orphans.
- 2.9 Support to Support Group for their Plan of Action
- 2.10 Train support groups and volunteers on human and legal rights.
- 2.11 Develop a directory of support groups and CBOs working with PLWHAs.
- 2.12 Develop a community mobilization strategy for support groups.
- 2.13 Assist support groups in conducting community mobilization through community based organizations, e.g kgotla, religious organizations, and schools.

Strategic Objective 3. To strengthen the capacity for participatory monitoring and evaluation of PLWHAs and support Group community based intervention.

- 3.1 Development of database of support groups and PLWHAs
- 3.2 Monitoring and supervisory field visit
- 3.3 Annual Program Evaluation workshop.