

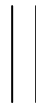


**Botswana Network of
People Living with HIV and AIDS**

P O Box 1599 • Mogoditshane • Botswana
Tel: (267) 306224
Plot 5306 • Maratadibe Road/Shashe North Road • The Village

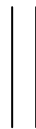


**ANNUAL PLAN OF ACTION
2003**



SUBMITTED

TO



NATIONAL AIDS COORDINATING AGENCY

**Prepared by
BONEPWA+ Secretariat
P.O. Box 1599,
MOGODITSHANE
TEL: 00267-3906224
FAX: 00267-3906224
e-mail: bonepwa@botsnet.bw
Website: www.bonepwa.botsnet.co.bw**

1.0 Introduction

The idea of a network of people living with HIV/AIDS was conceived in early 1995. A lot of consultations and need assessments were carried out notably with the financial and technical support of the AIDS/STD Unit, Ministry of Health and other development partners such as the UNDP and NGOs such as Ditshwanelo, BONASO to discuss the form, and functions of such a network. The dream came true when it was able to registered in 2000. Now the network is affiliated to the Network of African People Living With HIV/AIDS.

The importance of integrating People Living With HIV/AIDS (PLWHAs+) into the national response strategies for the reduction of the incidence and impact of HIV/AIDS has been long recognized at both the national and international levels. Already by 1999, UNAIDS had come up with the Best Practice Collection on From Principle to Practice: Greater Involvement of People Living With or Affected by HIV/AIDS. National AIDS Policy 1992, MTPII gave a broad scope of opportunity for the involvement of People Living with HIV/AIDS in prevention, care and support into the national response.

The HIV/AIDS epidemic which has succeeded in making Botswana stand out with the unenviable reputation of being the country with the highest reported HIV prevalence rates in the world - an estimated 300,000 Batswana (out of a population of 1.6 million people) are now living with HIV and AIDS. Estimates of HIV prevalence vary but they all bring the same message: the epidemic has reached crisis proportions. The President has declared a war situation – *ntwa e Bolotse*. **“We are threatened with extinction. People are dying in chillingly high numbers. It is a crisis of first magnitude,”: Festus Mogae, President of the Republic of Botswana (2001).**

Botswana Network of People Living with HIV/AIDS (**BONEPWA+**) has joined hands with other stakeholders in fighting the HIV/AIDS epidemic

Mission, Goals and Objectives

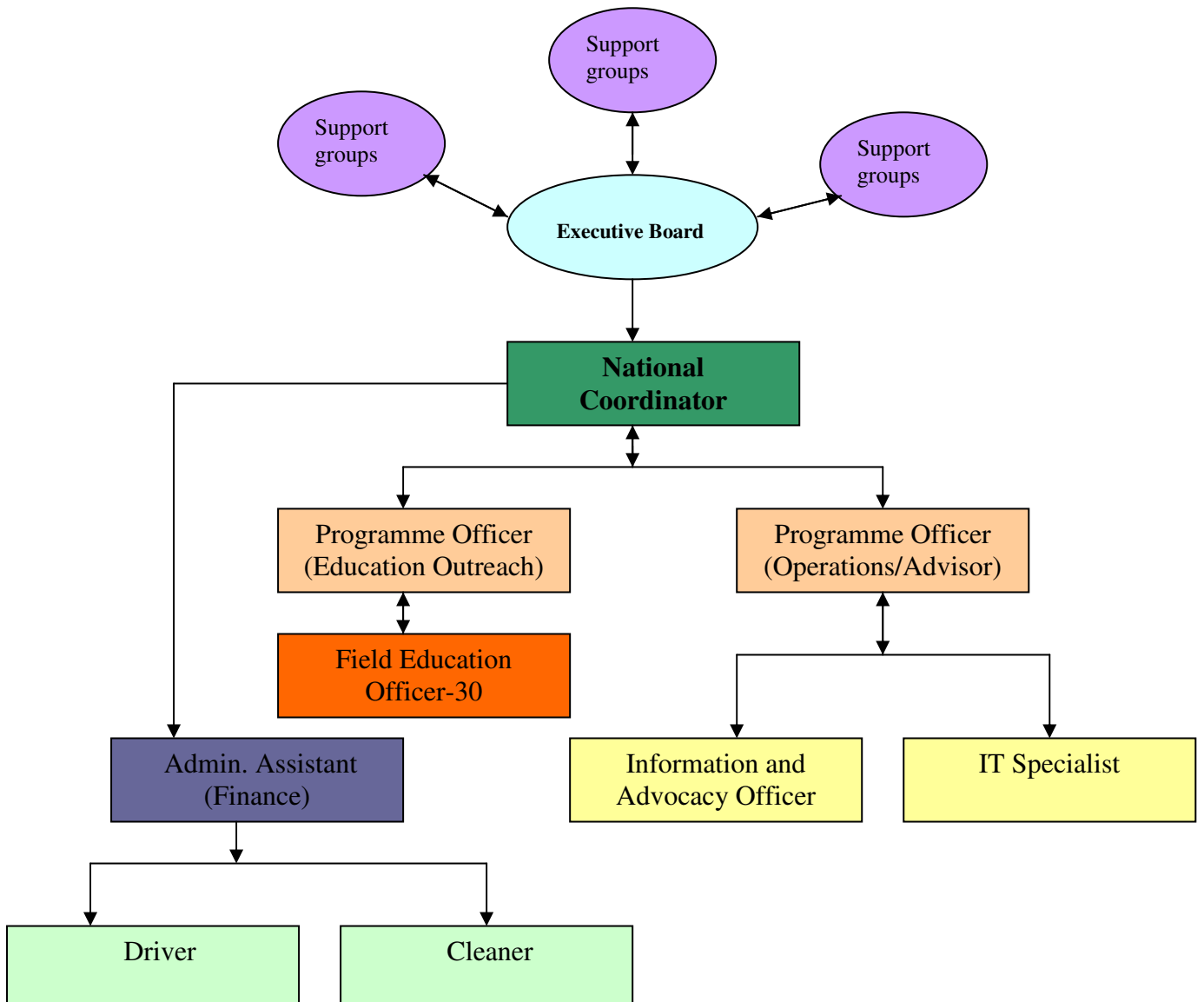
As **BONEPWA+**, we exist to improve the well being and quality of life of all people living with HIV/AIDS and to protect the nation of Botswana from further infections by promoting positive living, self – reliance, reduction of infection rates through HIV/AIDS education, prevention and care. In achieving these, we strive to maintain the following principles:

Consultation: Nothing for us without us
 Transparency
 Accountability
 Confidentiality
 Community participation
 Non – sexist and non – partisan

BONEPWA+ seeks to achieve its mission by:

- Facilitating the sharing of information, ideas, experiences and resources between and amongst support groups in Botswana;
- Facilitating the formation of support groups nation wide;
- Promoting and supporting networking and partnership building in HIV/AIDS programmes among people living with HIV/AIDS with other organizations locally and internationally;
- Facilitating the coordination of support groups' programmes on HIV/AIDS in order to reduce duplication, enhance their role and impact;
- Providing leadership and a common forum for concerted advocacy efforts and for appropriate policies, legislation and human rights for PLWAs;
- Engaging in empowerment and enterprise development activities that will improve the quality of life of PLWAs;

Organizational Structure:



An Executive Board has been set-up to provide vision, oversight and direction to the network. This structure ensures that the programmes of the network are relevant to the needs of the constituency, that is PLWAs.

A Secretariat has been set up and full time staff; National Coordinator and UNV-Programme Advisor (UNDP), Administrative Assistant, Driver and cleaner are hired. They have been given adequate job descriptions and are busy setting up systems and procedures for establishing a credible and efficient network. Program Officer (Education Outreach) with support of UNICEF is in the process of hiring. 30 Field Officers are already trained and will be placed in position when program is being launched. Other structures existing are Administrative Assistant, Driver and a Cleaner.

The proposed structure (as shown above) will be reviewed by Executive Board and adopted.

Achievements:

National AIDS Coordinating Agency (NACA) is being a major and regular partner; BONEPWA+ is supported for Advocacy, Institutional Capacity Building, Networking and support to support groups. Strategic plan for 2001-2004 is in place. A major theme for **BONEPWA+** has been the Integration of People Living With HIV/AIDS into mainstream Design, Planning, Implementation, Monitoring & Evaluation of the HIV/AIDS Response in Botswana. **BONEPWA+** is equally concerned with **Integrating gender into HIV/AIDS Interventions for/by PLWHA's**. **BONEPWA+** is a member of National AIDS Council. It is taking part in significant role in advocating, mobilization of PLWAs in many of the sectors strategies and the activities. Mobilization of Membership and rationalizing the criteria, benefits, rights and obligations of members has been initiated. 27 support groups have been affiliated to BONEPWA+. Secretariat of BONEPWA+ is being supported by NACA.

Partnership and networking relations have been built with a number of government departments, international AID Agencies, such as the UNDP, **UNICEF, UNFPA, WHO** other **NGOs** and private sector representatives.

UNICEF has been a partner with BONEPWA+. A project “ **Improve schools to be child friendly community education outreach centre for HIV/AIDS information and services**” is an on going program, 30-field education officers are trained. The program will be launched shortly. The program will cover Six Hundred and Seventy primary schools within one year.

World University Service of Canada (WUSC) supported for series of sensitization seminars as a follow up to the advocacy and mobilization exercise undertaken earlier, in five districts across the country. These seminars managed to bring together, on average, 20 PLWAs per seminar facilitated by a PLWA. The following were the districts covered: Kasane, Masunga, Hukuntsi,

Selibe Phikwe, and Ghantsi. WUSC also has contributed to BONEPWA+ for feasibility study of income generation activity (IGA). Based on the study lists of activity will be carried out during this year 2003 in the area of capacity building of PLWAs for income generation activities. With the technical support of VSO/WUSC a web page has been developed and BOTSNET has also graciously provided the network with web hosting services to allow BONEPWA+ to be “on-line”.

HIVOS

HIVOS International supported for the period of September 2001-December 2002 BONEPWA+ for administrative support, purchase of equipments and a reflection workshop. As BONEPWA+ has ended up with the project with HIVOS, there is strictly need of administrative support to run the National Network.

ACHAP

A proposal has been forwarded to ACHAP to support BONEPWA+ to cover two main areas; PLWAs in support groups throughout Botswana are educated on prevention, basics on treatment and care, nutrition, counselling and build-up institutional capacity building of BONEPWA+ establishing and strengthening of more PLWAs Support groups in the communities. BONBPWA+ is still waiting for their response.

Proposed Annual Plan of Action of BONEPWA+ for 2003 supported by NACA

In line with the mission of BONEPWA+, it has set following objectives to be achieved by 2003 through NACA support.

1. Objectives:

1. Strengthening its own ability to implement the strategic plan.
2. Mobilization and networking of support groups through out the country.
3. Capacity building of support groups for expanded services based on PLWHA's+ needs assessments.
4. Strengthen Information, Education on prevention, care and support.
5. Carryout Research /Studies/Evaluation of HIV/AIDS programmes .

2.0 Activities

- 2.1 A leadership and governance refresher course will be carried out for the executive board members to strengthen BONEPWA+ for the accomplishment of strategic plan.
- 2.2 Executive Board meeting will be held quarterly and annual general meeting will be carried out.
- 2.3 Strategic plan 2001-2004 will be reviewed and revised in line with National Strategic Framework and revised National AIDS policy.
- 2.4 Office set up will be strengthened for effective running of the Network.
- 2.5 A nation – wide mobilization initiative covering all districts will be carried out for the formation and strengthening of support groups.
- 2.6 IEC materials on BONEPWA+ will be developed and disseminated; (newsletter, Brochure, Web page)
- 2.7 Capacity building of BONEPWA+ and support groups by attending/presenting in various workshops, seminars and conferences.
- 2.8 Capacity building of support group members for well-being through various skill oriented trainings for income generation activities.
- 2.9 Evaluation of BONEPWA+ Programs and Annual Plan Development Workshop.